

INTO THE WEEDS

ACTIVITY BOOKLET



After learning about invasive and native species with Rivers Are Alive, your students can continue developing their understanding by reading our fact sheets and completing the accompanying crossword puzzle.

All questions can be answered by reading the fact sheets and watching the Into the Weeds videos.

Native Species Fact Sheet

Page 2



Invasive Species Fact Sheet

Page 3

Terrestrial vs. Aquatic Fact Sheet

Page 4



Crossword Puzzle

Page 5

Small Word Search

Page 6

Large Word Search

Page 7

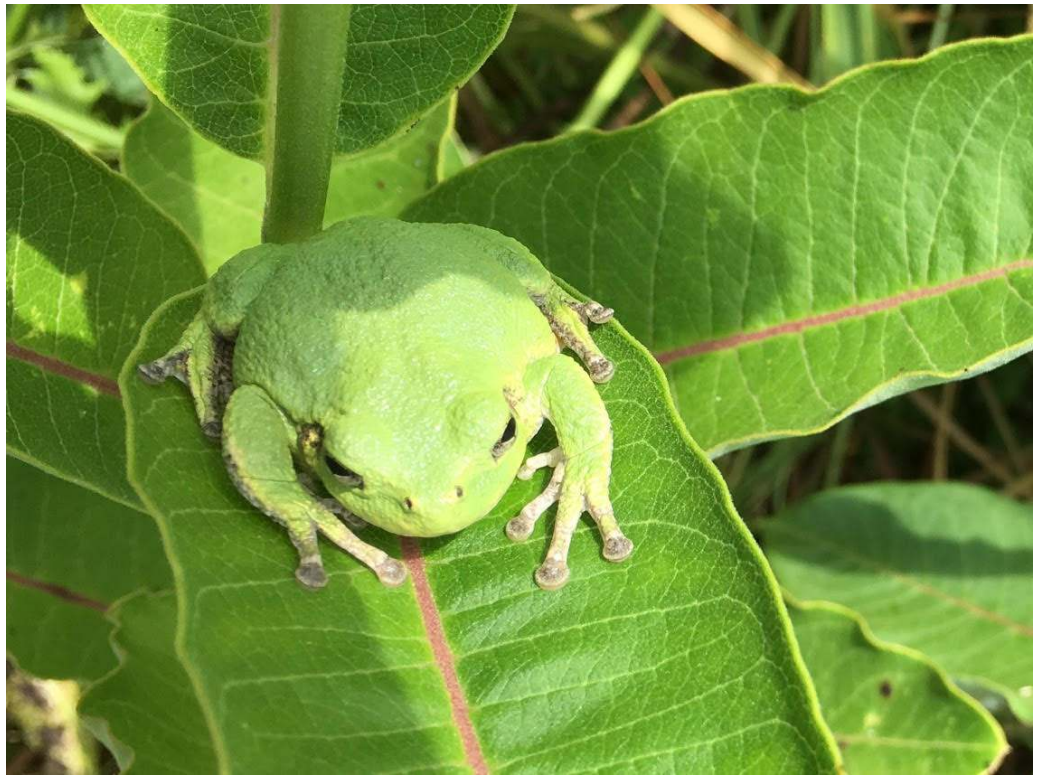


Let us know if you enjoyed doing this activity booklet or if you have any suggestions for improvement. Find more fun activities and contact information at <https://wilddriversconservancy.org/learn-explore/rivers-are-alive/>

WHAT ARE NATIVE SPECIES?

NATIVE SPECIES ARE...

Plants or animals that have evolved in a specific region for a long time and have an important role in balancing the ecosystem.



Native species are important to protect because they each play a role in balancing the food web. If one native species—such as Canada goldenrod—disappears, many of our native bees and butterflies could lose their food and disappear as well. Native species need a healthy ecosystem to survive, and a healthy ecosystem needs native species.



INVASIVE SPECIES?!?



Invasive species are plants or animals that are moved from one place where they have lived for a long time to a new place where they have never been before. When they arrive, they cause harm to the ecosystem and/or the economy.



Invasive species are bad for the ecosystem. They disrupt the natural balance by out-competing the native species for important resources such as sunlight or nutrients.

AQUATIC INVASIVE SPECIES



Remember!

- Clean
- Drain
- Dry

To help prevent the spread of aquatic invasive species!

Aquatic invasive species can be found living in or near the water.

They are known to change water quality, which can negatively impact the native species that live in the water.



Terrestrial invasive species can be found living on land.

They can kill trees, take over forests, and even harm native animals by ruining their habitat. Every year, they cost us billions of dollars to control.

Remember!

- Play
- Clean
- Go

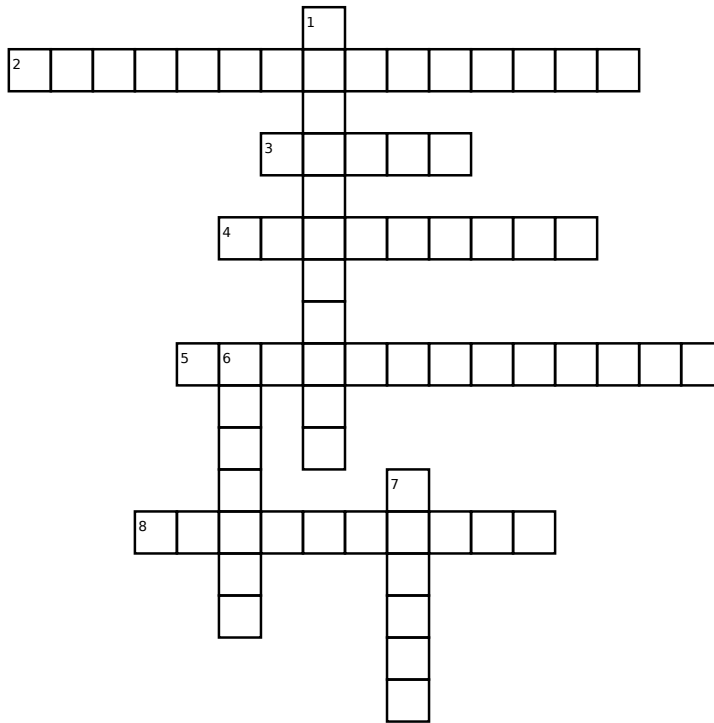
To help prevent the spread of terrestrial invasive species!



TERRESTRIAL INVASIVE SPECIES



Into the Weeds

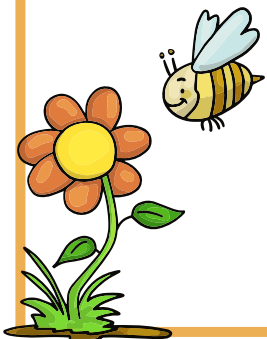


Down:

1. This type of invasive species can only be found living on land.
6. This type of invasive species can only be found living in or near the water.
7. If you clean your boots before and after a hike, you can help prevent the _____ of invasive species.

Across:

2. Plants or animals that have been moved to a new habitat and cause harm to the ecosystem and/or economy.
3. To prevent the spread of aquatic invasive species, remember to always Clean. _____. Dry.
4. Plants need sunlight, water, air, and space to grow and survive. These are known as natural _____.
5. Plants or animals that have lived in a specific region for a long time and have an important role in balancing the ecosystem.
8. When invasive plants create so much shade that native plants die or get pushed out, we say that the invasive plants win the competition or _____ the native plants.



Into the Weeds

B R R O T G D C H F
I N V A S I V E A L
B O O T S U J I R O
N S N Y K T A Z M W
W A P A N I M A L E
A S T R L O A P U R
T W E I E M I L S R
E L T E V A R A U T
R P X B D E D N N W
E S C I Q S L T L I

Invasive

Flower

Harm

Native

Seeds

Sun

Animal

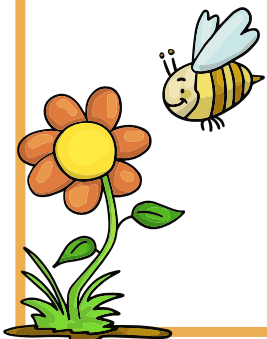
Boots

Plant

Spread

Water

Air



Into the Weeds

R S F K N A T I V E M R X W V
S E P E D S P R E A D D W D C
E P S E H N Z M P V D A A E D
E F J O C A T X H A B I T A T
D A G K U I R E O K T E E S S
S E R A W R E M C X T O R U N
I B P T N F C S F U F U Y N B
J N U T H I L E P U A T H L A
K B V C H W M Y S A L C D I I
H P D A K R O A V C W O S G R
U J L W S T E R L Q S M P H L
M V W A R I H A M S A P A T O
A W X T N H V O T S T E C U R
N T Z U F T T E R E D T E D Z
S G B O O T S N E N K E D E T

Earthworms

Sunlight

Habitat

Threat

Seeds

Outcompete

Harmful

Animals

Native

Water

Buckthorn

Species

Plants

Boots

Space

Resources

Invasive

Spread

Humans

Air

