

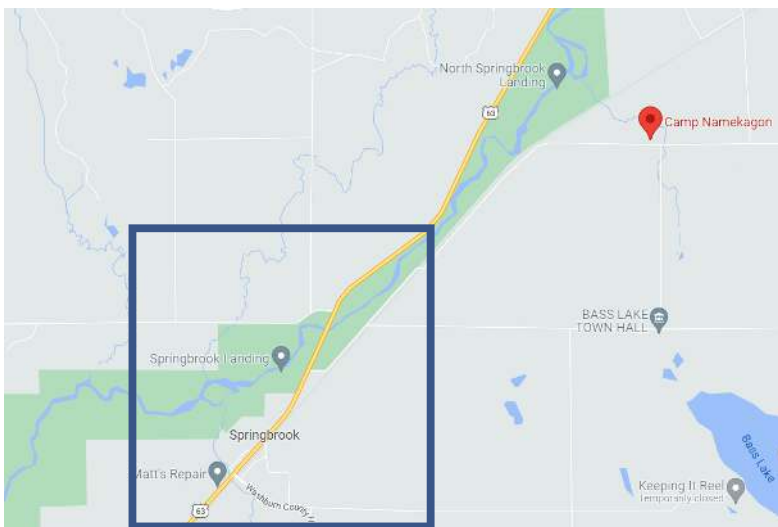


DIRECTIONS TO CAMP NAMEKAGON

Day one of your 3-Day paddle begins at Camp Namekagon in Springbrook, WI. Upon your arrival, staff will greet you and guide you through signing in, transferring your gear, getting your PFD and paddle, and most importantly - grabbing lunch! From Camp Namekagon, you and your kayak will be shuttled to Phillipi Landing for put-in. Your paddle journey will also conclude here - your last stop before headed home.

TO W2108 LARSON RD, SPRINGBROOK, WI 54875:

From Twin Cities and Western Wisconsin: There are several routes that will get you to Trego, WI. Once in Trego, take a right onto Hwy 63 N towards Hayward. After about 8 miles, you will arrive in the town of Springbrook, WI. Take a right onto Larson Road. Stay straight on Larson for 2.4 miles. Camp Namekagon will be on your left.



Questions? Email paddle@wildriversconservancy.org