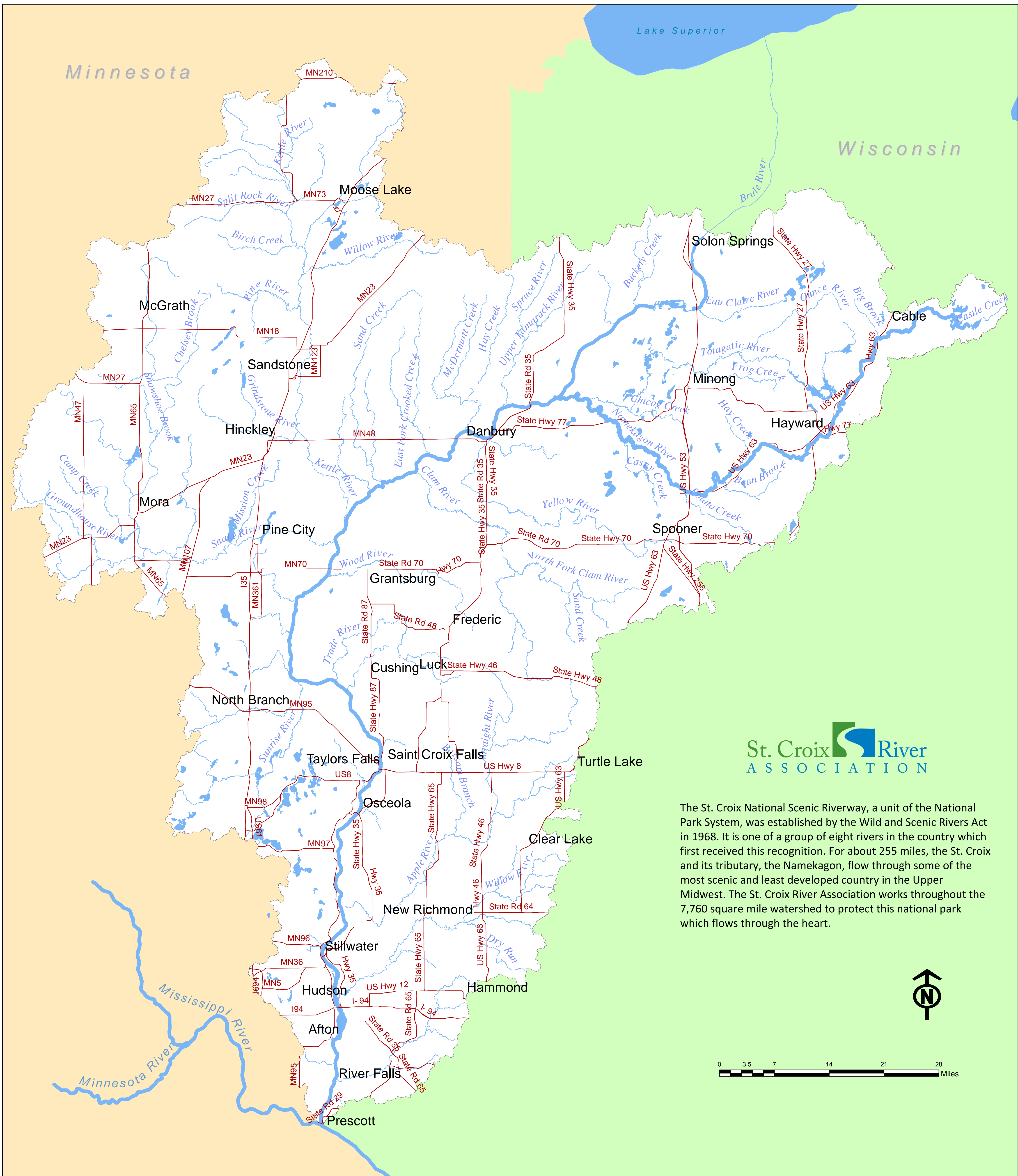


St. Croix River Watershed



The St. Croix National Scenic Riverway, a unit of the National Park System, was established by the Wild and Scenic Rivers Act in 1968. It is one of a group of eight rivers in the country which first received this recognition. For about 255 miles, the St. Croix and its tributary, the Namekagon, flow through some of the most scenic and least developed country in the Upper Midwest. The St. Croix River Association works throughout the 7,760 square mile watershed to protect this national park which flows through the heart.

